

**SANY**<sup>®</sup>

# SPECIFICATION



 **450t**

 **80m**

 **122.8m**

# SAC4500T7

SANY ALL TERRAIN CRANE

QUALITY CHANGES THE WORLD

[www.sanyglobal.com](http://www.sanyglobal.com)

It is one of the core business units in SANY Group, specializing in the development and manufacturing of high-end wheel cranes, crawler cranes and tower cranes, including the complete range of wheel cranes from 8 to 2400t, crawler cranes from 25 to 4500t and tower cranes from 6 to 185t.



SANY CRANE



## Strong lifting capacity

Telescopic boom: 7-section U shape boom, max. lifting moment 1350t·m. The max. load at 80m full-extension boom reaches 20t. Fixed jib: variable combinations from 6m to 48m, mechanical adjustment at 0°/20°/40°, max. lifting height 123m, easily coping with lifting tasks at different height.

Luffing jib: variable combinations from 12m to 78m, max. lifting height 145m. The configuration of "65m boom + 7m adapter + 48m luffing jib + superlift device" forms 120m boom plus jib length, capable of lifting 10t within 50m radius, realizing heavy lifting at large radius on one hundred meters high.

Superlift device: self assembly and disassembly requiring no helper crane. The lifting capacities at long boom are more than doubled. (Max. load 42t at full-extension boom)

Wind power configuration: 65t at 80m height, 56t at 85m height, 45t at 90m height, 36t at 95m height, covering 1.5MW wind turbine overhauling needs.

## Travel flexibility

Innovative 6-axle chassis, all wheel steering, four wheel drive, multiple steer & drive modes, super strong travel adaptability. All new smart multi-mode hydro pneumatic suspension, functioning real-time monitor, active rising, and adjustable damping self-adaption, making driving more comfortable and stable.

Robust power and transmission system, highest speed 80km/h, max. gradient 50%. Hydraulic torque converting and retarder brake, enhancing driving safety and smoothness.



# SAC4500T7

SANY ALL TERRAIN CRANE  
450T LIFTING CAPACITY

## High efficiency

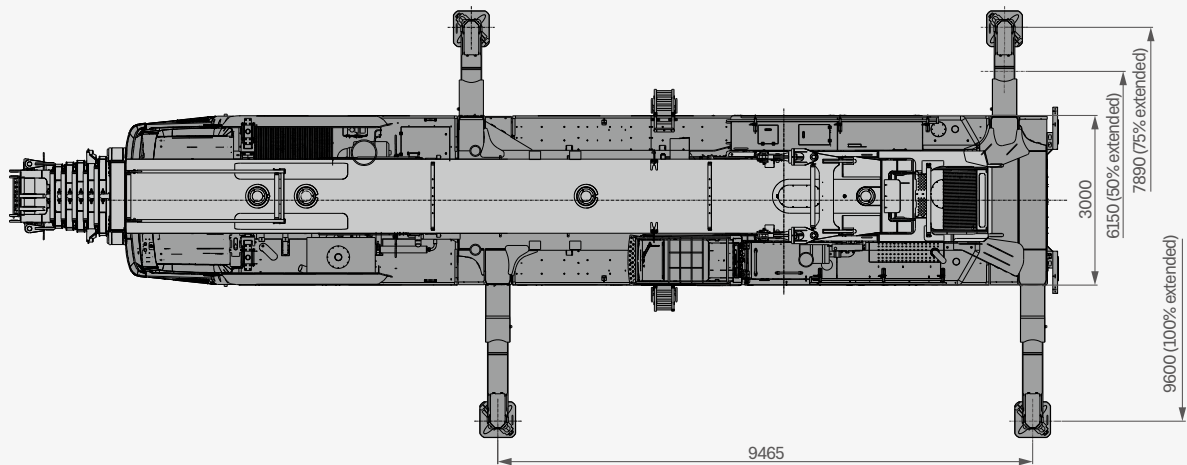
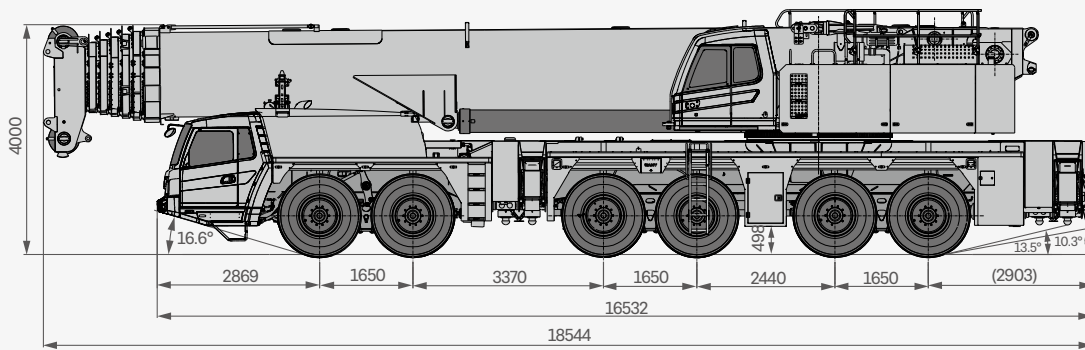
Hydraulic system consisting of multi pumps and multi circuits for electro-proportional and staged pressure control, featuring stepped speed control and optimized inching motion.  
Superlift stable tensioning technology, one-key tensioning and swing control, working efficiency raised by 20%, boosting lifting capabilities at long boom.

## Safety and reliability

Multi-functional wireless remote control, more convenient and safe.  
Anti-tipping-over early warning system, safety protection program and fault diagnosis available.  
Highly precise, stable, and smart load moment indicator.  
Multiple sensors realizing real-time monitoring, making working data well-displayed at any time.



# Overall Dimensions



# Technical Specification

CATEGORY	ITEM	UNIT	VALUE	
CAPACITY	Max. lifting capacity	t	450	
WEIGHT	Gross weight	kg	72000 (excl. boom sections 3-7)	
POWER (SUPERSTRUCTURE)	Max. engine power	kW/rpm	205/2200	
	Max. engine torque	N·m/rpm	1100/(1200-1600)	
POWER (CHASSIS)	Max. engine power	kW/rpm	480/1600	
	Max. engine torque	N·m/rpm	3100/1300	
DIMENSIONS	Overall length	mm	17538	
	Overall width	mm	3000	
	Overall height	mm	4000	
TRAVEL	Max. travel speed	km/h	80	
	Steering radius	Min.steering radius	m	12.5
		Min.steering radius of boom tip	m	14.4
	Wheel formula	-	12 × 8	
	Min.ground clearance	mm	300	
	Approach angle	°	16	
	Departure angle	°	12	
	Max.gradeability	-	50%	
	Fuel consumption per 100km	L	≤100	
MAIN PERFORMANCE	Working temperature range	°C	-25~+45	
	Min.rated lifting radius	m	3	
	Boom sections (Qty.)	-	7	
	Boom shape	-	U shape	
	Max.lifting moment	Basic boom	kN·m	13230
		Full-extension boom	kN·m	8565
	Boom length	Basic boom	m	15.4
		Full-extension boom	m	80
		Max. combination of boom+fixed jib	m	74.8+6+42
	Outrigger span (Longitudinal × Transverse)	m	9.4 × 9.6	
Jib offset	°	0, 20, 40		
AIRCONDITIONER	In operator's cab	-	Heating & cooling	
	In driver's cab	-	Heating & cooling	

# Technical Specification



## Axle Load

Axle	1	2	3	4	5	6	Gross weight
Load per axle /t	12	12	12	12	12	12	72
Remark	Excl. boom sections 3-7, hook blocks, counterweight bracket, superlift connector.						



## Hook

Rated loa /t	Number of sheaves	Rope rate	Hook weight/kg
● 160	7	14	1627
● 80	3	7	723
● 32	1	3	521
○ 12.5	0	1	526

● Standard      ○ Optional



## Operations

Item	Rope diameter/length	Max. single line pull
Main winch	24mm/605m	13.5t
Slewing	0-1.2r/min	
Luffing up/down	90s/110s	
Boom extending	780s	
Outrigger jack	Retraction	55s
	Extension	50s
Outrigger beam	Retraction	50s
	Extension	50s



# Crane Introduction

Carrier

## Driver's cab

- The cab is a new steel structure developed by Sany, with excellent shock absorption and sealing performance. It is equipped with pneumatic suspension driver's seat and co-driver's seat, adjustable steering wheel, large rearview mirror, comfortable headrest, demisting fan, cooling/heating A/C and stereo radio, etc. In addition, the control instruments and meters are well arranged to provide comfortable, safe and user friendly experience.

## Carrier frame

- Developed and manufactured by Sany, the frame is optimized to anti-torsion box structure welded by fine grain high-tensile steels. The outriggers are retracted in fixed boxes placed between axle 2 and 3 and frame tail. Front and rear towing devices available.

## Chassis engine

- Model: Mercedes-Benz OM473LA, electronically controlled, in-line six-cylinder, watercooled, supercharged intercooled, electronic injection diesel engine.
- Power: 480kW / 1600rpm.
- Torque: 3100N·m / 1300rpm.
- Emission standard: complying with China National VI.
- Fuel reservoir capacity: approx. 600L.

## Transmission

- ZF auto transmission, with integral hydraulic retarder for wear-free brake and hydraulic torque converter for wear-free start, reaches a wide range of speed ratios with 12 forward gears and 2 reversing gears, which is adaptable to slope climbing and high-speed traveling on public roads.

## Axle

- Kessler axles with disc brake, all wheel steering. Axle 1, 3, 5, and 6 are drive axles. Axle 6 is fitted with disengagement device. Three axle drive on public roads, four axle drive on tough terrains. Axle 1 and 2 are steered mechanically with hydraulic booster; axle 3 to 6 are steered by electro hydraulic power, which helps control travel speed and provides special steering mode, featuring easy steering and flexible maneuverability.

## Suspension system

- Multi-mode height adjustable (+160mm/-130mm) hydro-pneumatic suspension devices with hydraulic lockout, which can realize five modes incl. suspension, rigid locking, auto leveling, whole vehicle rising and single point rising & lowering. It can conduct real-time monitoring of vehicle attitude, smart identifying of axle load, active rising and self-adaptability to tough terrains, ensuring smoothness and lateral stability during driving.

## Tires

- 12 radial tires - 445/95 R25 as standard.

## Brake

- Dual circuit, air brake, disc brakes available.
- Service brake: air servo brakes on all wheels, dual circuit, all wheels equipped with disc brakes.
- Parking brake: actuated by pressure accumulators on axles 2 to 6.
- Assist brake: engine brake and exhaust brake on the engine, transmission hydraulic retarder brake.

## Steering

- All new constant pressure and constant flow steering system featuring linear following without lag and precise steering angle. Three steering emergency systems available. The steering mode is adjusted according to the speed. Starting from 30km/h, axle 3 and 4 stop steering, and by 60km/h, axle 5 and 6 stop steering.
- Six steering modes: 1) on-road driving (default); 2) all wheel steering; 3) crab steering; 4) reduced swing out steering; 5) independent rear axle steering; 6) independent front axle steering.

## Outrigger

- H-type two-stage telescopic outriggers. The hydraulic system of outrigger telescoping adopts electro proportional control with wireless remote controller. The control panel can display load on outriggers, and has the function of auto leveling, featuring high precision and easy operation.

## Electrical system

- 24V DC power supply with lighting system, chassis power cut-off available. The throttle and outrigger are controlled by electrical system, which makes the movements easy and fast. The electrical system has strong detection, logic and calculation capabilities, with fault self-diagnosis, centralized display and self-protection functions.
- The chassis adopts CAN-Bus system, which is fast, stable and accurate. the centralized display system is multi-functional; the protection level is as high as IP65; the power consumption is small, which is only 5W at most; four function keys are provided in the user interface; LCD screen is with adjustable contrast.

# Crane Introduction

superstructure



## Operator's cab

- Press welding construction, 20° tiltable to increase visibility for load at heights. Outward-opening type door, panoramic skylight with safety glass, softened interior trim, rollable sunshade. Joystick is mounted on the control box; operator seat backrest can be tilted and repositioned; A/C vent arrangement is optimized. All is designed ergonomically.
- Touch screen of one-key operation and adjustable viewing angle, safeguarding lifting operation in multiple images and angles. Key areas incl. boom, luffing jib and superlift winch are monitored by surveillance camera. The console and display are combined reasonably for more convenient man-machine interaction.



## Superstructure engine

- Model: Mercedes-Benz M906LA.E3A/1, electronically controlled, inline six-cylinder, water-cooled, supercharged intercooled, diesel engine.
- Power: 205kW/2200r/min.
- Torque: 1200N·m/1200-1600rpm.
- Emission standard: complying with EU Stage IIIA.
- Fuel reservoir capacity: 300L.



## Boom & telescoping system

- Telescopic boom: one base section plus six telescoping sections. Bended and welded using fine grain high tensile steel. Oval cross section of torsion resistance. Single cylinder auto pinning telescoping mechanism. One double acting cylinder controls all sections for variable length combinations. Basic boom 15.4m, full extension 80m.
- Jib: fixed jib and luffing jib available. They share the same adapter, jib head, and 6m/12m inserts. Fixed jib has 7 combinations from 6m to 42m (without adapter), offset at 0° /20° /40°. Luffing jib has 12 combinations from 12m to 78m, significantly increasing lifting capacities and heights.
- Superlift device: independently arranged at left and right sides of the base boom head, self assembled and disassembled requiring no helper crane. The superlift device makes the force state of boom greatly improved, avoiding side bending and reducing deflection of long boom by 20%-30%, and the lifting performance can be increased by up to two fold.



## Hoist

- Hydraulic motor driven planetary reducer and specialized groove drum, with brake.
- Rigging: high quality wire rope lock is applied. Rope end cast and installed in lock sleeve, increasing reeving speed.
- Spec. φ 24-2160, anti-rotation wire rope.
- Max. single rope speed (the 4th layer): approx. 130m/min.



## Luffing system

- Double cylinders. Luffing angle: -0.2° ~84°.
- Double-pump flow confluence open type hydraulic circuit is adopted, and combination of active and passive luffing mechanism controlled electro proportionally, can realize fast speed at large angle and stable process at smaller angle.



## Slewing

- Fixed displacement motor and reducer are adopted and mesh externally with the ring. 360° slewing. Stepless speed regulation possible. Slewing speed 0-1.2rpm. The closed type slewing system reduces energy loss as well as increases efficiency. Electro-proportional brake pedal and emergency brake available.



## Slewing platform

- Made of fine grain high-strength steel plate, the structure is optimized to facilitate stronger bearing capacity and torsion resistance.



## Counterweight

- 20t mount tray and 10\*10t CW blocks feature 7 combinations of 0t, 20t, 40t, 60t, 80t, 100t, and 120t, which can meet the needs of different working conditions and maximize the performance. Counterweight can be mounted and dismounted by remote control.



## Hydraulics

- The superstructure hydraulics adopts open and closed type combined system, featuring load sensing, heavy load in low speed and smaller load in high speed, ensuring high efficiency. Luffing and telescoping systems are of open type formed by electro proportional pump and self-made main valve, functioning one-key pressure calibration and smart modification. Staged pressure and electro proportional pump displacement realized energy efficiency and operation safety. Hoist adopts close type to ensure responsive hook movement and wide speed range. Slewing closed system ensures non-time-delay start and stop. Counterweight lifting and lowering, operator's cab tilting and turntable lockout available.
- The pump, piston motor and balance valve come from international name brands of high quality and reliability. Open and closed type electro proportional pump can adjust displacement for maximized energy usage rate. Double pump confluence and shunt mode realizes pressure and flow stepless adjustment and non-interfering dual circuit control. Single motion by confluent flow and combined motions by divided flow.



## Control system

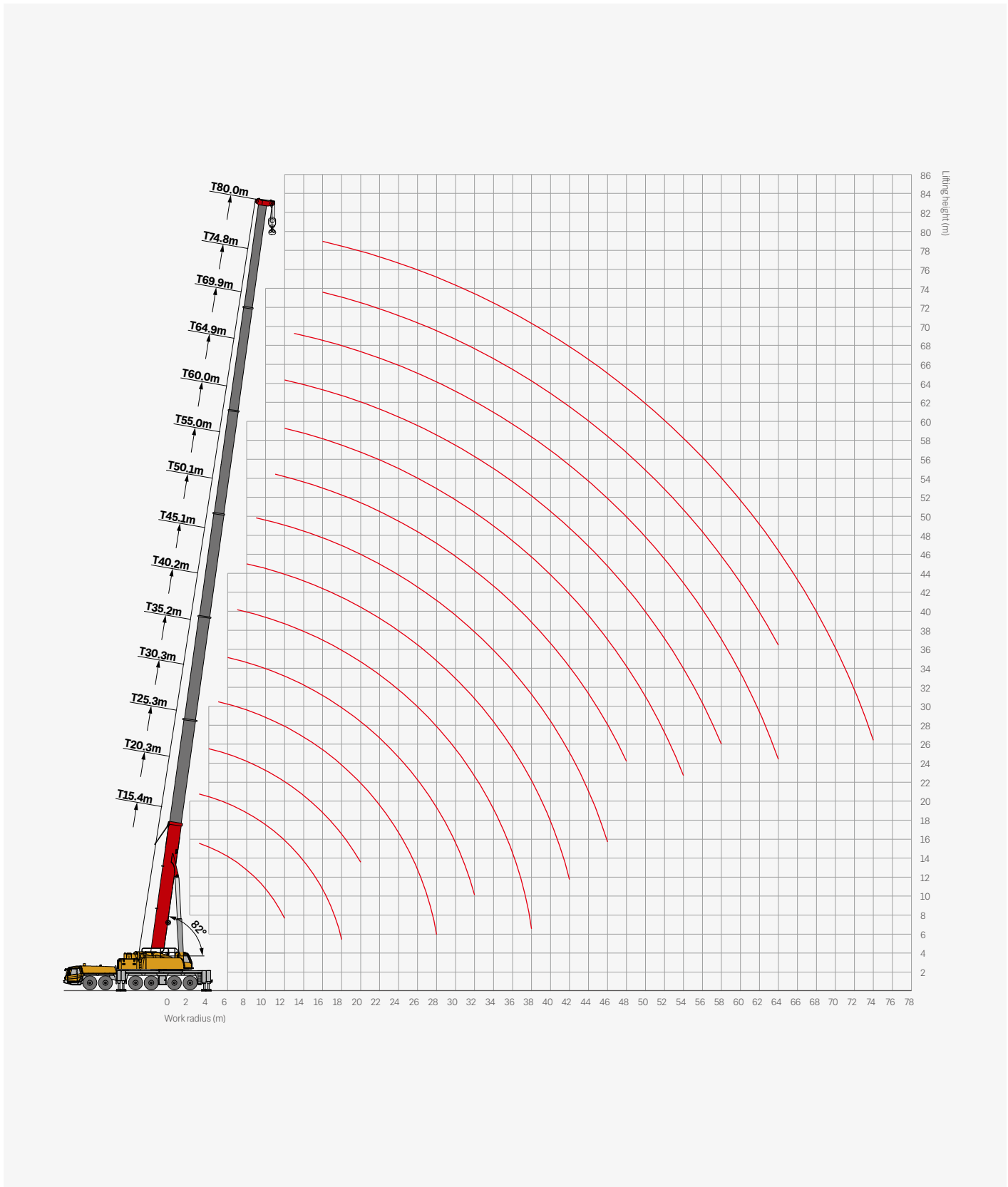
- Powered by 24V DC and using IFM controller and harness wiring, the control network of CAN-BUS combined with conventional electrical system functions logic control and electro proportional control.
- System real-time monitoring and automatic fault diagnosis available.
- Hoisting, slewing and luffing are controlled by two electro proportional joysticks which can be automatically reset in multiple directions; telescoping is operated by floor-mount pedal; counterweight lifting, operator's cab swing, lifting and tilting, slewing platform locking are all controlled by the control panel.
- The display is connected to the controller by CAN Bus, and it functions digital adjustment and display of electro proportional control parameters, display of electro proportional system fault codes, and display of real-time data of hydraulic system.



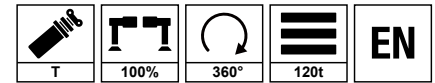
## Safety equipment

- The LMI calculation system ensures load accuracy ranging ± 3% through online empty-load calibration.
- Hydraulic system is configured with hydraulic balance valve, relief valve, two-way hydraulic lock to achieve stability and reliability.
- The main winch is equipped with three-circle protector to prevent wire rope from over-hoist-down.
- The height limit switch at boom and jib heads prevents wire rope from over-hoist-up.
- Anemometer at boom head detects wind speed for operation safety.
- Superlift rope tensioning protection program and load protection program available.

# Operating Range - Telescopic Boom



# Load Chart-Telescopic Boom



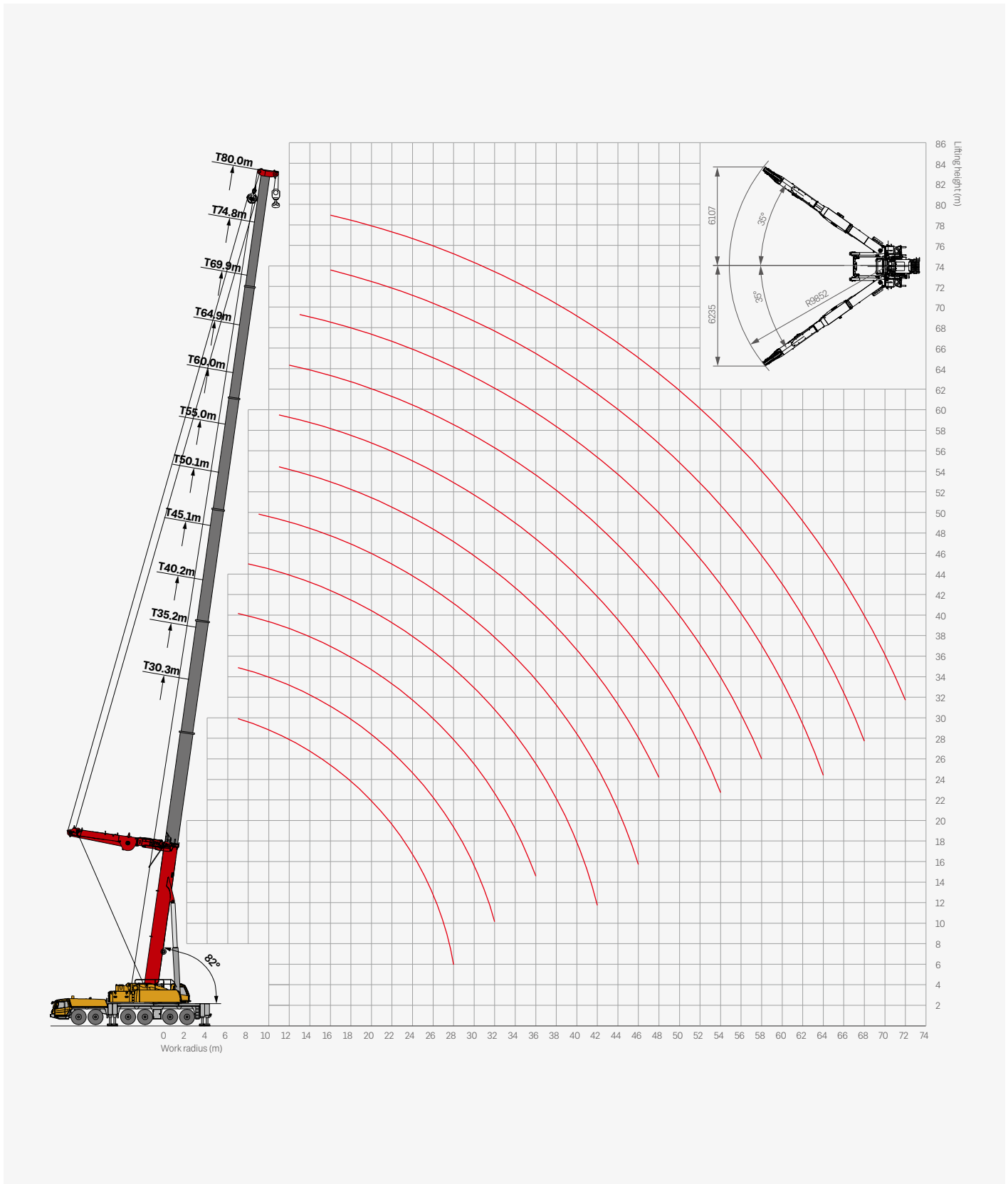
Unit: t

	15.4m*	15.4m	20.3m	25.3m	30.2m	35.2m	40.2m	45.1m	50.1m	55m	60m	64.9m	69.9m	74.8m	80m		
3	450.0	220.0														3	
3.5	260.0	220.0	190.0													3.5	
4	235.0	220.0	185.0	175.0												4	
4.5	215.0	215.0	180.0	173.0	161.0											4.5	
5	198.0	200.0	175.0	170.0	160.0	145.0										5	
6	180.0	180.0	170.0	168.0	159.0	140.0	111.0									6	
7	165.0	165.0	163.0	163.0	155.0	135.0	110.0	105.4								7	
8	155.0	154.6	154.2	153.8	149.9	130.0	105.0	100.4	79.8							8	
9	145.0	141.1	143.0	140.3	139.8	125.0	100.0	95.7	73.5	64.4						9	
10	135.0	130.0	130.0	130.0	128.4	115.0	95.0	91.2	69.0	59.8	51.5					10	
11	115.0	115.0	120.0	116.0	118.3	107.5	92.5	85.6	63.6	56.1	48.6	40.0				11	
12	100.0	105.0	110.0	105.0	109.1	100.0	90.0	80.2	59.6	52.6	46.0	39.0	31.0			12	
13	90.0	90.0	102.0	94.0	101.2	97.3	87.9	73.9	55.9	50.1	43.8	37.7	31.0			13	
14			94.0	85.0	93.0	93.8	85.7	69.3	52.4	47.0	41.1	36.0	31.0	25.0	20.0	14	
16			78.0	75.0	79.6	80.4	78.8	61.7	46.6	41.8	37.3	33.0	29.6	23.0	19.5	16	
18			54.0	68.0	69.1	70.0	70.1	55.0	41.5	38.0	33.7	30.0	28.0	22.5	19.0	18	
20				60.5	60.7	61.6	61.7	49.8	37.8	35.0	30.6	27.5	26.4	22.0	18.5	20	
22					53.8	54.6	54.8	45.1	34.9	32.0	28.2	25.5	24.8	21.5	17.5	22	
24					47.3	48.8	49.0	41.0	32.1	29.5	26.0	23.4	22.9	20.0	16.5	24	
26					41.3	42.9	44.1	37.7	30.3	27.5	24.6	21.7	21.1	18.6	15.5	26	
28					28.9	37.9	39.4	34.2	28.1	25.4	22.7	21.5	20.2	17.4	14.5	28	
30						33.7	35.2	32.1	26.3	23.5	21.0	20.1	19.5	16.3	14.0	30	
32							30.0	31.6	29.6	24.8	21.9	19.8	18.9	18.5	15.3	32	
34								29.1	27.2	22.8	20.8	18.9	17.9	17.5	14.4	34	
36								26.9	25.6	21.2	19.5	18.0	16.8	16.4	13.5	36	
38								18.7	23.9	20.3	18.5	16.8	15.8	15.3	12.6	38	
40									22.4	18.8	17.5	15.7	14.9	14.5	11.8	40	
42									20.7	17.5	16.5	15.0	14.2	13.8	11.1	42	
44										16.3	15.5	14.1	13.5	12.9	10.6	44	
46										15.0	14.5	13.2	12.5	12.2	9.9	46	
48										12.0	14.0	12.6	11.5	11.6	9.3	48	
50											13.0	12.1	11.0	10.7	8.7	50	
52											12.0	10.8	10.5	10.3	8.2	52	
54												10.1	10.0	9.8	7.7	54	
56												9.4	9.5	9.2	7.2	56	
58													8.9	8.8	6.7	58	
60													8.0	8.3	6.3	60	
62													7.0	8.0	5.9	62	
64														7.6	5.5	4.9	64
66														7.1	5.0	4.5	66
68															4.6	4.0	68
70															4.2	3.9	70
72																3.6	72
74																3.3	74
	13		12	11	9	8	7	5	4	4	3	2	2	2	1		
	14.5	14.5	14.5	13.0	13.0	11.3	11.3	11.3	11.3	11.3	11.3	11.3	11.3	11.3	11.3		

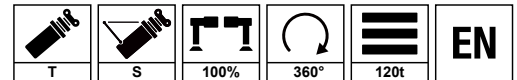
**Remark:**

- \* indicates load over rear, requiring additional equipment.
- Ratings above are the rated capacity when the crane is in a level condition on flat and solid ground.
- Ratings above are the max. load of certain boom length, regardless of extending modes.
- Ratings above include the weight of hooks and riggings.
- Ratings above are given according to the larger radius or boom length value when the actual radius or boom length falls between two numbers above.







# Operating Range - Telescopic Boom with Superlift Device



# Load Chart - Telescopic Boom with Superlift Device



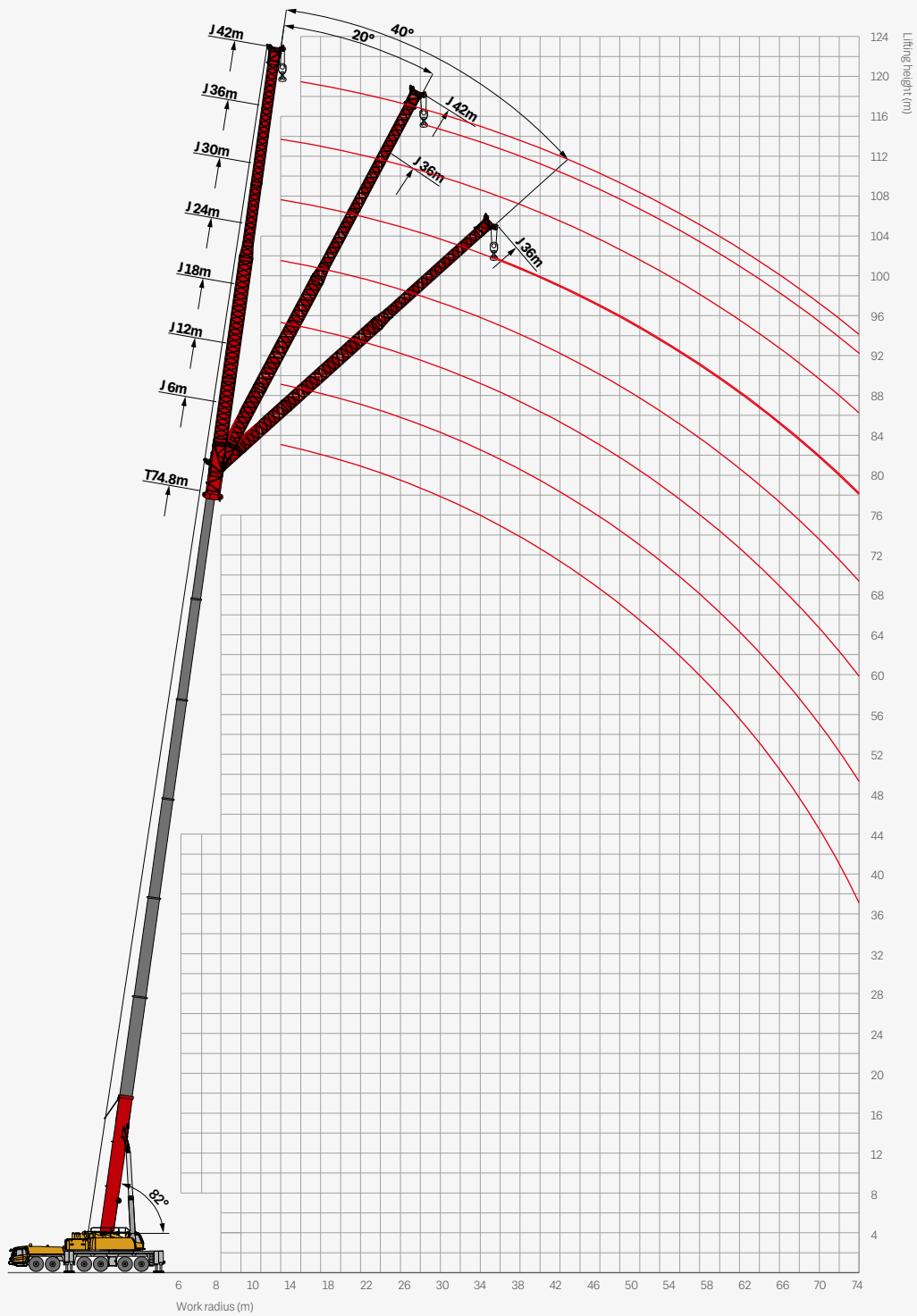
Unit: t

 m	30.2m	35.2m	40.2m	45.1m	50.1m	55m	60m	64.9m	69.9m	74.8m	80m	 m
6	159	154	143									6
7	155.0	148.5	137.5	126.5								7
8	148.1	143.0	132.0	120.5	100.0							8
9	133.9	133.9	125.4	114.9	93.0							9
10	123.1	124.5	118.8	109.5	89.7	90.0						10
11	113.0	114.5	114.4	102.7	85.8	88.0	83.0					11
12	104.2	105.8	107.2	96.2	83.6	86.0	81.0	70.0				12
13	96.6	98.1	99.5	88.7	81.4	83.0	79.0	69.0	60.0			13
14	89.7	91.3	92.8	83.2	79.2	80.0	77.0	67.0	58.0	48.0	42.0	14
16	76.6	78.6	80.3	74.1	72.6	72.0	71.0	62.0	53.0	46.0	40.0	16
18	65.7	67.7	69.5	66.0	67.1	64.0	65.0	57.0	48.4	45.0	38.0	18
20	56.9	59.0	60.7	59.8	60.5	59.5	58.0	53.0	46.2	44.0	35.0	20
22	50.0	51.7	53.6	54.2	53.5	55.0	52.0	47.3	44.0	43.0	32.0	22
24	44.5	45.7	47.5	49.2	47.6	49.2	48.0	44.0	41.8	40.0	31.0	24
26	38.0	40.6	42.4	44.5	42.4	44.1	45.0	41.8	39.6	37.2	30.0	26
28		36.0	38.0	40.1	37.8	39.7	42.0	38.5	37.4	34.8	29.0	28
30		33.0	35.0	35.7	33.4	35.3	39.0	34.1	35.2	32.6	28.0	30
32		27.1	31.5	31.9	29.6	31.5	35.3	31.9	31.9	30.6	27.0	32
34			28.1	28.6	26.8	29.4	31.9	29.4	29.2	28.8	25.6	34
36			23.6	25.7	25.1	26.9	29.0	26.8	27.2	27.0	24.2	36
38				23.5	23.5	25.2	26.4	24.7	24.7	25.2	23.0	38
40				22.0	21.8	23.6	24.2	23.1	22.4	23.5	21.6	40
42					20.3	21.5	22.1	21.4	21.0	21.5	20.4	42
44					19.0	19.7	20.2	19.4	18.9	19.7	19.2	44
46					17.0	18.1	18.6	18.4	17.9	18.0	18.0	46
48						16.5	17.0	16.8	16.8	16.5	16.7	48
50						15.1	15.6	15.8	15.7	15.1	15.4	50
52							14.3	14.5	14.4	13.8	14.1	52
54							13.2	13.4	13.3	12.7	12.8	54
56							12.0	12.2	12.2	11.5	11.8	56
58								11.2	11.1	10.5	10.7	58
60								10.2	10.1	9.5	9.7	60
62									9.2	8.5	8.8	62
64									8.3	7.6	7.9	64
66										6.8	7.1	66
68										6.0	6.3	68
70										5.3	5.6	70
72											4.9	72
74											4.3	74
 $C_n$	8	7	6	6	5	4	3	3	2	2	2	 $C_n$
 m/s	13.0	11.3	11.3	11.3	11.3	11.3	11.3	11.3	11.3	11.3	11.3	 m/s

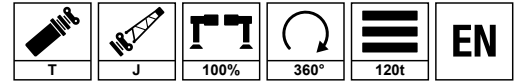
**Remark:**

1. Ratings above are the rated capacity when the crane is in a level condition on flat and solid ground.
2. Ratings above are the max. load of certain boom length, regardless of extending modes.
3. Ratings above include the weight of hooks and riggings.
4. Ratings above are given according to the larger radius or boom length value when the actual radius or boom length falls between two numbers above.

# Operating Range - Fixed Jib



# Load Chart - Fixed Jib

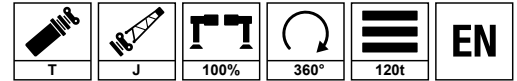


Unit: t

Lift height m	50.1m							55m							60m							Lift height m		
	6m	12m	18m	24m	30m	36m	42m	6m	12m	18m	24m	30m	36m	42m	6m	12m	18m	24m	30m	36m	42m			
12	42.0																						12	
13	40.2																							13
14	37.5	32.0						34.7																14
16	35.4	29.0	25.0					32.6	25.0						27.0	21.0								16
18	32.6	27.0	23.2	17.0	12.0	9.3		29.8	23.0	20.5					26.0	20.0	16.5							18
20	29.9	25.0	21.6	16.5	10.8	8.8	7.5	27.5	22.0	19.5	15.5	10.4	7.9		23.9	19.5	15.5	12.5	9.8					20
22	27.5	23.0	19.7	15.8	10.1	8.3	7.0	25.3	21.0	18.0	14.5	9.9	7.5	6.4	22.2	18.5	15.0	12.0	9.4	6.9				22
24	25.5	21.0	18.3	14.8	9.5	7.9	6.5	23.5	19.0	17.0	13.5	9.3	7.2	6.1	20.6	17.5	13.5	11.5	8.9	6.6	5.7			24
26	23.6	19.0	17.0	13.6	9.0	7.4	6.0	21.9	17.5	16.0	12.5	8.8	6.9	5.8	19.2	16.0	13.0	11.0	8.5	6.3	5.5			26
28	22.0	18.0	15.9	12.7	8.4	7.0	5.7	20.5	16.5	15.0	12.0	8.4	6.6	5.5	17.9	15.0	12.5	10.2	8.1	6.0	5.3			28
30	20.5	17.0	14.8	12.0	7.9	6.6	5.4	19.9	15.5	14.0	11.5	7.9	6.3	5.3	16.8	14.0	12.0	9.7	7.7	5.7	5.0			30
32	19.0	16.0	13.8	11.2	7.4	6.2	5.1	18.5	14.5	13.0	10.5	7.5	6.0	5.0	15.7	13.0	11.0	9.1	7.4	5.4	4.8			32
34	17.1	15.0	12.9	10.5	7.0	5.9	4.8	17.3	13.5	12.0	10.0	7.1	5.8	4.8	14.7	12.0	10.4	8.6	7.0	5.1	4.6			34
36	15.4	14.0	12.1	9.8	6.7	5.5	4.5	16.2	12.5	11.5	9.5	6.7	5.5	4.5	13.7	11.0	9.8	8.1	6.7	4.8	4.4			36
38	13.9	13.0	11.4	9.2	6.3	5.2	4.3	15.1	11.5	10.7	9.1	6.3	5.2	4.3	12.8	10.5	9.3	7.7	6.3	4.6	4.2			38
40	12.7	12.0	10.7	8.7	6.0	5.0	4.0	14.1	11.0	10.0	8.6	6.0	5.0	4.1	12.0	10.0	8.7	7.3	6.0	4.4	4.0			40
42	11.5	11.0	10.1	8.1	5.7	4.7	3.8	12.8	10.0	9.4	8.0	5.7	4.7	3.8	11.3	9.3	8.1	6.9	5.7	4.1	3.8			42
44	10.4	10.0	9.6	7.7	5.5	4.4	3.6	11.6	9.5	8.8	7.5	5.4	4.4	3.6	10.6	8.7	7.6	6.6	5.5	3.9	3.6			44
46	9.4	9.1	9.1	7.3	5.2	4.2	3.4	10.6	9.2	8.3	7.0	5.1	4.2	3.4	10.0	8.1	7.1	6.2	5.2	3.7	3.4			46
48	8.6	8.3	8.5	6.9	5.0	4.0	3.3	9.6	8.3	7.7	6.6	4.9	4.0	3.3	9.1	7.7	6.7	6.0	5.0	3.4	3.3			48
50	7.7	7.5	7.7	6.5	4.7	3.8	3.1	8.8	7.6	7.3	6.2	4.6	3.8	3.1	8.3	7.1	6.3	5.2	4.7	3.2	3.1			50
52	7.0	6.7	7.0	6.2	4.5	3.6	3.0	7.9	6.8	6.8	5.6	4.4	3.5	2.9	7.6	6.7	5.7	4.9	4.5	2.9	3.0			52
54		6.0	6.3	5.9	4.3	3.5	2.8	7.2	6.1	6.0	5.3	4.2	3.3	2.8	6.9	6.4	5.4	4.6	4.3	2.7	2.8			54
56		5.5	5.7	5.5	4.1	3.3	2.7	6.5	5.5	5.5	5.0	4.0	3.1	2.7	6.3	5.7	5.0	4.2	4.1	2.5	2.7			56
58		4.8	5.2	4.8	3.8	3.2	2.6	5.5	4.9	5.0	4.7	3.8	2.9	2.5	5.7	5.1	4.7	4.0	3.8	2.3	2.6			58
60		4.3	4.7	4.2	3.5	3.0	2.5		4.4	4.5	4.2	3.6	2.6	2.4	5.1	4.6	4.3	3.4	3.5	2.0	2.5			60
62			4.1	3.7	3.2	2.9	2.4		3.8	4.0	3.5	3.4	2.4	2.3	4.7	4.1	3.7	3.1	3.2	1.8	2.4			62
64				3.3	3.0	2.7	2.2			3.5	3.1	3.2	2.1	2.2		3.6	3.3	2.9	3.0	1.6	2.2			64
66				3.0	2.7	2.5	2.1			3.1	2.7	3.0	1.9	2.1		3.2	2.9	2.7	2.7	1.4	2.1			66
68				2.7	2.5	2.3	2.0				2.4	2.8	1.7	2.0			2.6	2.5	2.5	1.2	2.0			68
70						2.1	1.9				2.1	2.6	1.5	1.9			2.3	2.2	2.3		1.9			70
72							1.7					2.5	1.8				1.7	2.1			1.7			72
74							1.6					2.3	1.7				1.5	1.8			1.6			74
76							1.4						1.6					1.6			1.4			76
78							1.2							1.4					1.4		1.2			78
80														1.2										80
	4	3	2	2	1	1	1	3	2	2	2	1	1	1	2	2	2	1	1	1	1			
	9.0	9.0	9.0	9.0	9.0	9.0	9.0	9.0	9.0	9.0	9.0	9.0	9.0	9.0	9.0	9.0	9.0	9.0	9.0	9.0	9.0			



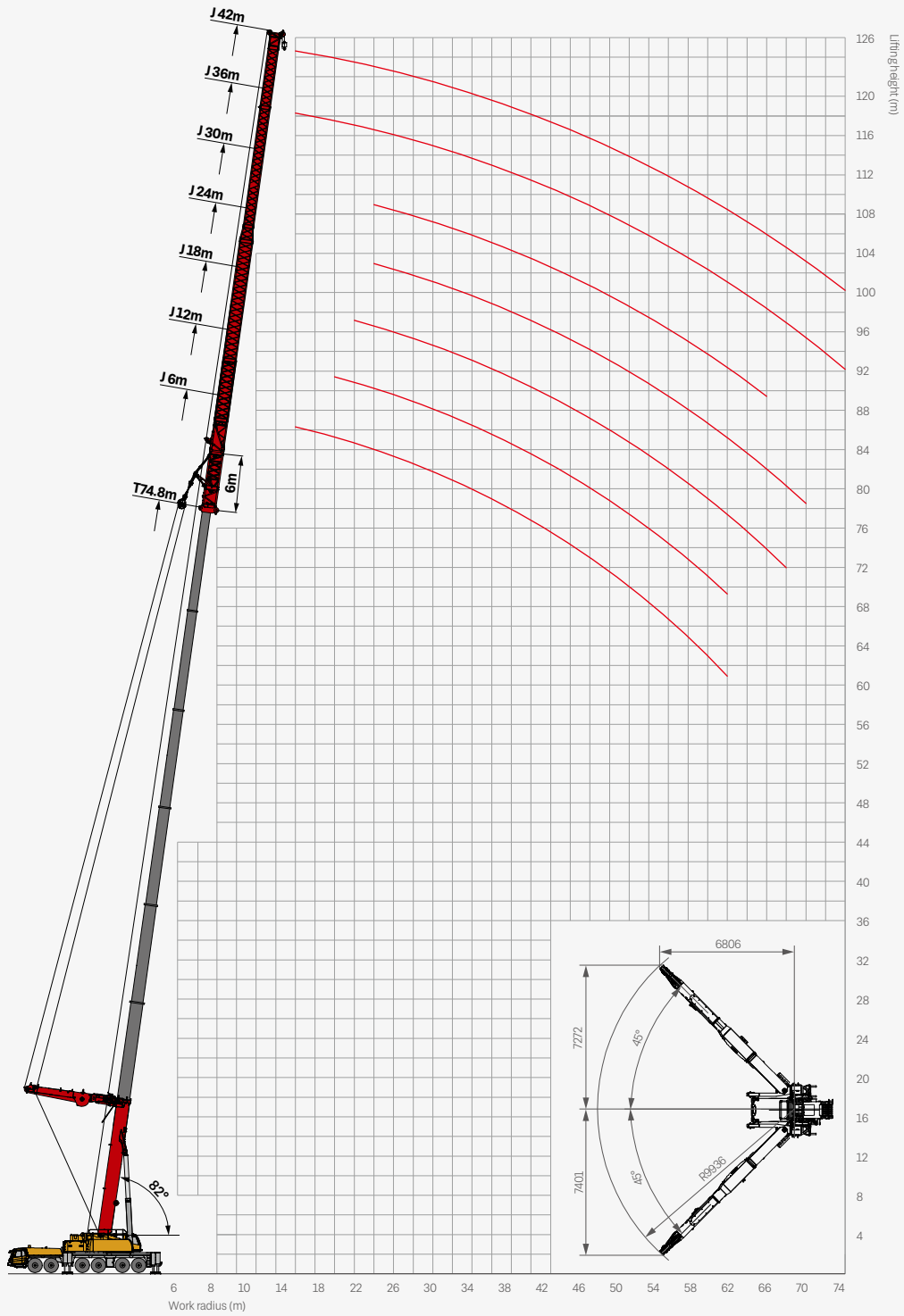
# Load Chart - Fixed Jib



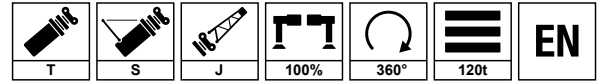
Unit: t

Jib m	64.9m							69.9m							74.8m							Jib m		
	6m	12m	18m	24m	30m	36m	42m	6m	12m	18m	24m	30m	36m	42m	6m	12m	18m	24m	30m	36m	42m			
12																							12	
13																								13
14																								14
16	22.0							16.0																16
18	20.6	16.0	13.0					15.9	14.1						14.2									18
20	19.3	15.0	12.0	11.0				15.7	13.8	11.5	9.0				13.8	12.0	9.0	7.1					20	
22	18.1	14.0	11.0	10.0	8.0			15.5	13.2	11.0	8.5	7.0			13.1	11.5	8.5	7.0	5.6				22	
24	16.9	13.0	10.0	9.0	7.5	5.0	5.3	15.0	12.5	10.5	7.9	6.5	4.5	4.6	12.4	11.0	8.2	6.8	5.5				24	
26	16.0	12.5	9.6	8.4	7.0	4.9	5.1	14.1	11.8	10.0	7.8	6.0	4.5	4.5	11.7	10.6	7.9	6.6	5.4	4.1	3.5		26	
28	15.1	12.0	9.0	7.9	6.5	4.8	4.9	13.3	11.1	9.5	7.3	5.6	4.3	4.4	11.0	10.0	7.6	6.3	5.2	4.0	3.4		28	
30	14.1	11.0	8.5	7.5	6.0	4.7	4.7	12.5	10.4	8.6	6.9	5.3	4.3	4.2	10.3	9.4	7.3	6.1	5.0	3.9	3.3		30	
32	13.2	10.5	8.1	7.1	5.6	4.6	4.5	11.7	9.9	8.2	6.5	5.0	4.2	4.0	9.6	8.9	7.0	5.9	4.8	3.8	3.2		32	
34	12.3	10.0	7.7	6.7	5.3	4.5	4.3	10.9	9.6	7.8	6.1	4.7	4.2	3.9	9.0	8.6	6.6	5.6	4.6	3.7	3.1		34	
36	11.5	9.5	7.4	6.3	4.9	4.3	4.1	10.1	9.0	7.4	5.8	4.5	4.1	3.7	8.4	8.1	6.3	5.4	4.4	3.6	2.9		36	
38	10.8	9.0	7.0	6.0	4.7	4.1	4.0	9.5	8.5	7.0	5.5	4.3	4.1	3.6	7.8	7.7	6.0	5.1	4.2	3.4	2.7		38	
40	10.2	8.5	6.7	5.7	4.4	4.0	3.8	8.9	8.1	6.7	5.2	4.0	4.0	3.5	7.3	7.3	5.6	4.8	4.1	3.3	2.6		40	
42	9.5	8.1	6.4	5.4	4.2	3.7	3.6	8.4	7.5	6.4	5.0	3.8	3.7	3.3	6.8	6.8	5.3	4.6	3.9	3.1	2.5		42	
44	9.0	7.5	6.1	5.1	4.0	3.6	3.4	7.9	7.0	6.1	4.7	3.6	3.6	3.2	6.3	6.3	4.9	4.3	3.7	3.0	2.4		44	
46	8.4	7.1	5.8	4.9	3.8	3.5	3.3	7.4	6.5	5.8	4.5	3.4	3.5	3.1	5.8	5.9	4.6	4.0	3.5	2.9	2.3		46	
48	7.9	6.6	5.4	4.6	3.6	3.2	3.2	7.0	6.1	5.5	4.3	3.1	3.2	2.9	5.4	5.5	4.3	3.8	3.3	2.7	2.1		48	
50	7.5	6.2	5.1	4.1	3.4	3.1	3.0	6.6	5.7	5.2	4.0	2.8	3.1	2.8	5.0	5.1	4.0	3.5	3.0	2.6	2.0		50	
52	7.1	5.8	4.8	4.0	3.3	2.9	2.9	6.2	5.1	4.7	3.8	2.7	2.9	2.6	4.6	4.6	3.7	3.2	2.8	2.4	1.9		52	
54	6.6	5.4	4.5	3.8	3.1	2.6	2.7	5.8	4.7	4.3	3.7	2.5	2.6	2.4	4.2	4.2	3.4	3.0	2.6	2.2	1.8		54	
56	6.0	5.0	4.1	3.6	2.9	2.4	2.6	5.5	4.4	4.0	3.5	2.4	2.4	2.2	3.8	4.0	3.1	2.7	2.4	2.0	1.6		56	
58	5.5	4.8	3.7	3.4	2.6	2.3	2.5	4.9	4.2	3.7	3.2	2.1	2.3	2.0	3.4	3.8	2.9	2.5	2.2	1.9	1.5		58	
60	5.0	4.4	3.5	3.0	2.4	2.0	2.3	4.3	3.8	3.5	3.0	1.9	2.0	1.8	3.1	3.4	2.6	2.3	1.9	1.7	1.3		60	
62	4.6	4.0	3.3	2.8	2.2	1.8	2.1	3.9	3.6	3.2	2.8	1.6	1.8	1.6	2.8	3.2	2.3	2.0	1.8	1.5	1.5		62	
64	4.1	3.6	3.0	2.6	2.0	1.4	1.9	3.5	3.3	3.0	2.5	1.4	1.6	1.4	2.6	3.0	2.1	1.8	1.5	1.2	1.2		64	
66	3.7	3.2	2.8	2.4	1.9		1.7	3.2	3.1	2.8	2.2		1.4		2.3	2.8	1.8	1.6	1.3				66	
68		2.8	2.5	2.2	1.7		1.5	2.9	2.7	2.4	2.0				2.0	2.4	1.6						68	
70				2.0	1.6		1.3	2.2	2.3	2.3	1.7				1.8	2.1	1.4						70	
72				1.7	1.4				1.7	1.8	1.4				1.6	1.5	1.2						72	
74				1.5	1.2						1.1												74	
76				1.2																			76	
78																							78	
80																							80	
	2	2	1	1	1	1	1	2	2	1	1	1	1	1	2	1	1	1	1	1	1			
	9.0	9.0	9.0	9.0	9.0	9.0	9.0	9.0	9.0	9.0	9.0	9.0	9.0	9.0	9.0	9.0	9.0	9.0	9.0	9.0	9.0			

# Operating Range - Fixed Jib with Superlift Device



# Load Chart - Fixed Jib with Superlift Device

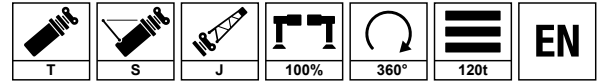


Unit: t

Lift height m	50.1m							55m							60m							Lift height m		
	6m	12m	18m	24m	30m	36m	42m	6m	12m	18m	24m	30m	36m	42m	6m	12m	18m	24m	30m	36m	42m			
11	51.6																						11	
12	50.9	39.2						45.7																12
13	50.1	38.3	30.7					45.3	38.0															13
14	49.1	37.1	29.8	22.5				44.6	37.0	29.7					41.3									14
16	46.9	34.8	27.8	21.5	15.8			42.9	35.0	27.7	21.5	14.8			40.0	34.0	25.0							16
18	43.7	32.8	26.3	20.5	14.8	12.2	10.3	41.0	33.0	26.3	20.5	14.0	11.5	9.8	38.4	32.0	24.0	19.8	14.0					18
20	40.1	30.8	24.8	19.5	14.0	11.5	9.8	38.6	31.0	24.8	19.5	13.3	11.0	9.3	36.7	30.0	23.0	18.8	13.3	11.4				20
22	37.0	28.0	23.4	18.4	13.3	11.0	9.3	35.6	29.0	23.3	18.4	12.7	10.4	8.8	34.6	28.0	22.0	17.8	12.7	10.7	8.5			22
24	33.8	26.5	22.3	17.3	12.7	10.4	8.8	33.0	27.0	22.1	17.3	12.0	10.0	8.4	32.1	26.0	21.0	16.8	12.0	10.4	8.2			24
26	30.6	24.8	21.1	16.1	12.0	9.9	8.3	30.4	25.0	21.0	16.1	11.5	9.5	7.9	30.0	25.0	20.0	15.8	11.5	9.9	7.8			26
28	27.7	23.5	20.2	14.9	11.5	9.4	7.9	27.7	23.6	20.4	14.9	10.9	9.1	7.5	27.8	23.5	19.0	14.8	10.9	9.5	7.5			28
30	25.3	22.0	19.2	13.9	10.9	9.0	7.5	25.3	22.6	19.1	13.9	10.5	8.8	7.3	25.6	22.6	18.0	14.0	10.5	9.1	7.2			30
32	23.0	21.0	18.4	12.8	10.5	8.5	7.2	23.0	21.6	18.3	12.8	10.0	8.4	6.9	23.5	21.7	17.0	13.2	10.0	8.8	6.9			32
34	21.0	20.1	17.5	11.4	10.0	8.2	6.8	21.0	20.7	17.3	11.7	9.5	8.0	6.7	21.5	20.6	16.0	12.4	9.5	8.4	6.5			34
36	19.2	19.1	16.7	10.9	9.5	7.8	6.5	19.2	19.7	16.5	11.2	9.1	7.7	6.3	19.8	19.0	15.0	11.6	9.1	8.0	6.3			36
38	17.4	18.2	16.0	10.4	9.1	7.4	6.3	17.4	18.2	15.5	10.8	8.6	7.4	6.1	18.2	17.6	14.1	11.0	8.6	7.8	6.1			38
40	15.8	17.4	15.2	10.0	8.6	7.0	5.9	16.1	16.8	14.7	10.3	8.3	7.0	5.8	16.7	16.2	13.6	10.5	8.3	7.5	5.8			40
42	14.3	16.3	14.1	9.5	8.3	6.7	5.7	14.6	15.5	13.2	9.9	7.9	6.8	5.6	15.3	15.0	13.1	10.1	7.9	7.2	5.6			42
44	12.9	15.0	12.7	9.1	7.9	6.4	5.4	13.2	14.3	12.3	9.5	7.5	6.5	5.3	13.6	13.8	12.6	9.8	7.5	6.9	5.3			44
46	11.6	13.7	11.4	8.7	7.5	6.1	5.2	11.8	13.2	11.8	9.1	7.1	6.3	5.1	11.9	12.7	12.0	9.5	7.1	6.7	5.2			46
48	10.5	12.1	10.8	8.3	7.1	5.8	4.9	10.2	11.6	11.2	8.7	6.8	5.9	4.9	10.3	11.6	11.5	9.3	6.7	6.4	4.9			48
50	9.1	10.7	10.4	7.9	6.8	5.4	4.7	8.8	10.2	10.8	8.4	6.4	5.7	4.7	8.9	10.2	10.8	8.6	6.4	5.9	4.7			50
52	7.8	9.4	10.0	7.6	6.4	5.2	4.4	7.6	8.9	10.0	8.0	6.0	5.3	4.4	7.6	8.8	9.8	8.2	6.2	5.5	4.6			52
54	6.6	8.1	9.3	7.3	5.9	4.9	4.2	6.3	7.6	8.8	7.7	5.8	4.9	4.2	6.3	7.6	8.7	7.9	5.9	5.1	4.3			54
56	5.1	7.0	8.2	7.0	5.4	4.6	4.1	5.2	6.6	7.7	7.4	5.5	4.5	4.1	5.3	6.5	7.5	7.6	5.7	4.7	4.2			56
58		5.9	7.2	6.7	5.1	4.3	3.8	4.1	5.5	6.6	7.0	5.3	4.3	3.8	4.2	5.5	6.5	7.3	5.5	4.5	4.0			58
60		4.9	6.2	6.4	4.9	3.9	3.6	3.1	4.5	5.7	6.6	5.1	4.1	3.6	3.2	4.5	5.5	6.4	5.2	4.3	3.8			60
62		4.0	5.3	6.1	4.4	3.7	3.4	2.2	3.6	4.7	5.7	4.9	4.0	3.3	2.4	3.6	4.6	5.5	5.0	4.1	3.5			62
64		2.8	4.4	5.4	3.2	3.5	3.0		2.7	3.9	4.9	4.7	3.8	3.1	1.5	2.7	3.7	4.7	4.9	4.0	3.2			64
66			3.6	4.7	2.8	3.4	2.7		2.0	3.1	4.0	4.5	3.6	2.9		2.0	3.0	3.8	4.7	3.8	2.9			66
68			2.8	3.9	2.5	3.2	2.6		1.2	2.4	3.3	4.2	3.5	2.8		1.2	2.2	3.1	3.9	3.7	2.8			68
70				3.2	1.9	3.1	2.4			1.6	2.6	3.5	3.3	2.6			1.5	2.4	3.2	3.5	2.7			70
72				2.5		3.0	2.3				1.9	2.8	3.2	2.5				1.7	2.5	3.1	2.6			72
74				1.9		2.9	2.2				1.3	2.2	2.8	2.4				1.1	1.9	2.4	2.5			74
76						2.8	2.1					1.6	2.2	2.3					1.3	1.8	2.3			76
78						2.2	2.0					1.0	1.6	2.1						1.3	1.7			78
80						1.7	2.0						1.1	1.6							1.3			80
	4	3	3	2	2	1	1	4	3	3	2	2	1	1	4	3	2	2	2	1	1			
	9.0	9.0	9.0	9.0	9.0	9.0	9.0	9.0	9.0	9.0	9.0	9.0	9.0	9.0	9.0	9.0	9.0	9.0	9.0	9.0	9.0			

- Remark:
1. Ratings above are the rated capacity when the crane is in a level condition on flat and solid ground.
  2. Ratings above include the weight of hooks and riggings.
  3. Ratings above are given according to the larger radius or boom length value when the actual radius or boom length falls between two numbers above.

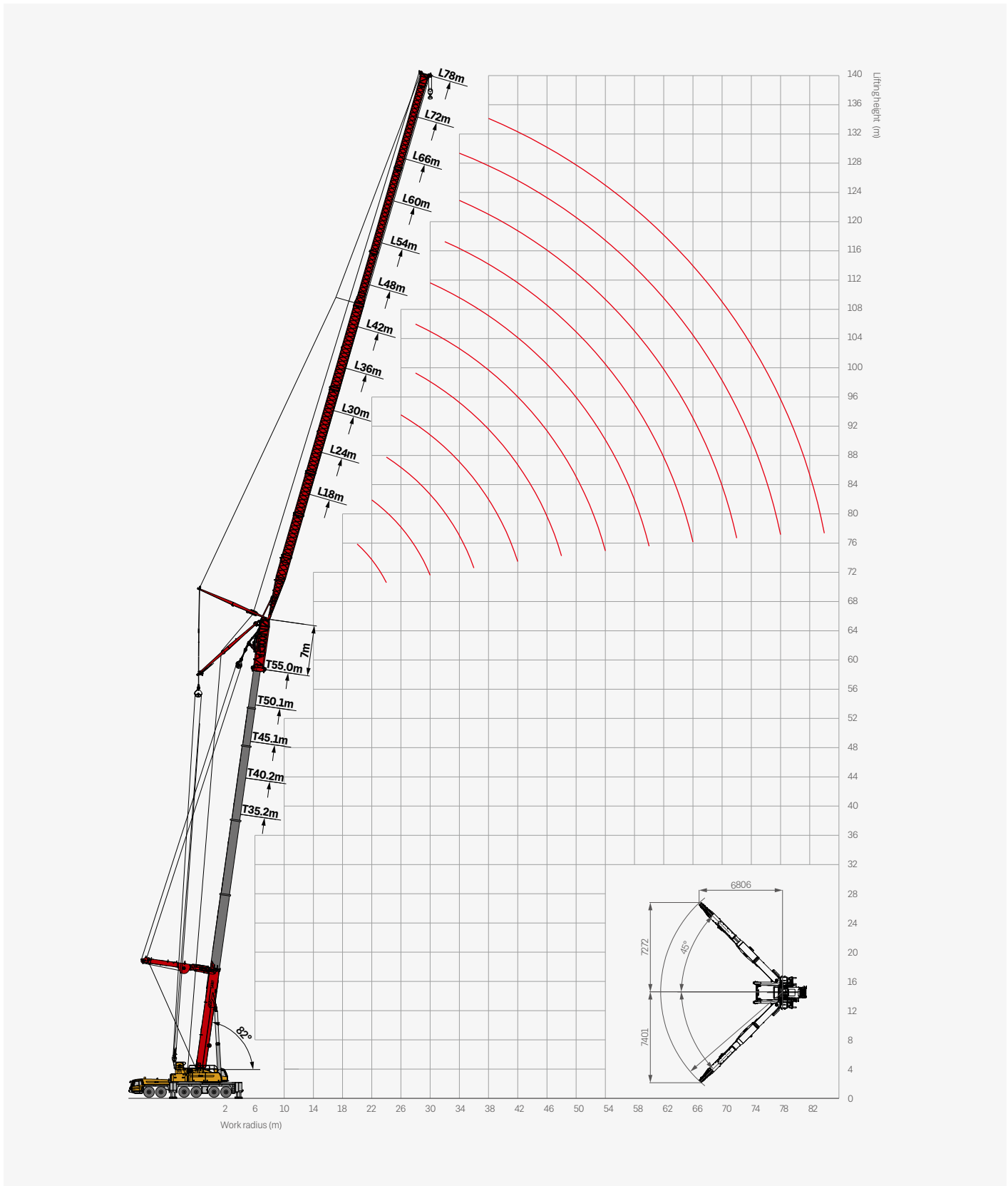
# Load Chart - Fixed Jib with Superlift Device



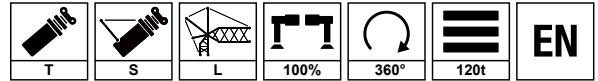
Unit: t

Height m	64.9m							69.9m							74.8m							Height m		
	6m	12m	18m	24m	30m	36m	42m	6m	12m	18m	24m	30m	36m	42m	6m	12m	18m	24m	30m	36m	42m			
11																							11	
12																								12
13																								13
14																								14
16	35.0	30.4																						16
18	34.0	29.0	24.0	19.8				29.0	26.5															18
20	32.7	27.7	23.0	18.8	13.3			28.6	25.9	19.9					24.0	20.5								20
22	31.4	26.5	22.0	17.8	12.7	10.7		27.7	25.4	19.7	17.0	12.4			21.9	20.1	17.0	13.6						22
24	29.9	25.4	21.0	16.8	12.0	10.4	7.9	26.6	24.5	18.9	16.2	12.0	10.0	7.9	21.1	19.6	16.2	13.0	9.6					24
26	27.9	24.4	20.0	15.8	11.5	9.9	6.9	25.6	23.6	18.1	15.5	11.4	9.5	6.9	20.3	19.2	15.4	12.4	9.1	8.6	7.0			26
28	26.1	23.5	19.0	14.8	10.9	9.5	6.6	24.1	22.6	17.4	15.0	11.0	9.0	6.6	19.1	18.8	14.6	12.0	8.8	8.0	6.7			28
30	24.3	22.6	18.0	14.0	10.5	9.1	6.3	22.6	21.5	16.7	14.3	10.5	8.6	6.3	16.9	17.6	14.1	11.5	8.4	7.7	6.4			30
32	22.5	21.7	17.0	13.2	10.0	8.8	6.1	21.1	20.3	16.1	13.8	10.1	8.4	6.1	15.0	15.7	13.5	11.0	8.1	7.5	6.2			32
34	20.7	20.6	16.0	12.4	9.5	8.4	5.8	19.6	19.0	14.4	13.3	9.8	8.0	5.8	13.3	14.0	12.1	10.6	7.9	7.1	5.9			34
36	19.0	19.0	15.0	11.6	9.1	8.0	5.6	18.1	17.7	13.0	12.8	9.5	7.7	5.6	11.8	12.6	11.0	10.3	7.6	6.8	5.8			36
38	17.5	17.6	14.4	11.0	8.6	7.8	5.3	16.6	16.5	11.7	12.4	9.1	7.5	5.3	10.5	11.2	9.9	9.9	7.3	6.7	5.3			38
40	16.1	16.2	13.9	10.5	8.3	7.5	5.1	15.3	15.2	10.7	11.8	8.8	7.2	5.1	9.4	10.1	9.0	9.5	7.1	6.4	5.2			40
42	14.8	15.0	13.5	10.1	7.9	7.2	4.9	14.0	14.0	9.6	10.7	8.5	6.9	4.9	8.3	9.1	8.1	8.6	6.8	6.2	5.0			42
44	13.5	13.8	13.0	9.8	7.5	6.9	4.7	13.0	12.8	8.7	9.8	8.1	6.7	4.7	7.4	8.1	7.3	7.8	6.5	5.9	4.9			44
46	12.2	12.7	12.0	9.4	7.1	6.7	4.5	12.5	11.7	7.9	8.9	7.7	6.5	4.5	6.5	7.3	6.6	7.1	6.2	5.8	4.7			46
48	10.7	11.6	11.0	9.1	6.8	6.4	4.3	11.1	10.7	7.1	8.1	7.6	6.2	4.3	5.7	6.5	6.0	6.5	6.1	5.5	4.4			48
50	9.2	10.3	10.1	8.8	6.5	5.9	4.2	9.7	9.8	6.5	7.4	7.0	6.0	4.2	5.0	5.8	5.4	6.0	5.6	5.4	4.2			50
52	7.9	9.0	9.3	8.5	6.3	5.5	4.0	8.4	9.0	5.8	6.7	6.5	5.8	4.0	4.4	5.2	4.9	5.4	5.2	5.1	3.8			52
54	6.7	7.7	8.5	8.2	6.1	5.1	3.8	7.2	8.1	5.3	6.1	5.9	5.6	3.8	3.2	4.6	4.4	4.9	4.8	5.0	3.4			54
56	5.6	6.7	7.6	7.8	5.9	4.8	3.7	6.1	7.0	4.7	5.6	5.4	5.3	3.7	2.6	4.0	3.9	4.5	4.3	4.7	2.9			56
58	4.5	5.6	6.5	7.1	5.7	4.7	3.5	5.1	5.9	4.2	5.0	5.0	4.9	3.5	2.3	2.8	3.5	4.0	4.0	4.3	2.6			58
60	3.6	4.6	5.6	6.4	5.5	4.5	3.4	4.1	5.0	2.9	4.6	4.5	4.5	3.4	1.8	2.4	2.4	3.7	3.6	4.0	2.5			60
62	2.7	3.7	4.6	5.5	5.3	4.3	3.2	3.1	4.1	2.5	3.2	4.1	4.1	3.2	1.4	1.6	2.1	2.5	3.3	3.7	2.4			62
64	1.8	2.9	3.8	4.6	5.0	4.1	3.1	2.3	3.3	2.2	2.8	2.9	3.8	3.1			1.9	2.2	2.3	3.4	2.2			64
66	1.0	2.1	3.1	3.8	4.6	4.0	3.0	1.5	2.4	1.7	2.3	2.3	2.6	3.0			1.5	1.9	1.9	2.3	2			66
68		1.3	2.3	3.1	3.8	3.8	2.9		1.7		1.8	2.0	2.3	2.9				1.4	1.7	2.0	1.9			68
70			1.6	2.4	3.1	3.6	2.7		1.0					2.1	2.7						1.8			70
72			1.0	1.7	2.5	2.9	2.6																	72
74				1.1	1.8	2.3	2.5																	74
76					1.2	1.7	2.2																	76
78						1.1	1.6																	78
80							1.1																	80
	3	3	2	2	1	1	1	3	2	2	2	1	1	1	2	2	2	2	1	1	1			
	9.0	9.0	9.0	9.0	9.0	9.0	9.0	9.0	9.0	9.0	9.0	9.0	9.0	9.0	9.0	9.0	9.0	9.0	9.0	9.0	9.0			

# Operating Range - Luffing Jib with Superlift Device



# Load Chart - Luffing Jib with Superlift Device



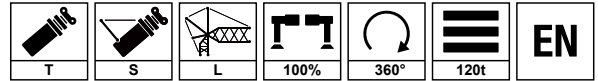
Unit: t

Luffing m	50.1m											55m											Luffing m	
	18m	24m	30m	36m	42m	48m	54m	60m	66m	72m	78m	18m	24m	30m	36m	42m	48m	54m	60m	66m	72m	78m		
18	37.4																						18	
20	36.8	30.5										30.5												20
22	35.9	29.9	25.9									29.9	26.5											22
24	34.5	29.0	25.3	20.1								29.3	25.4	22.4										24
26		28.8	24.7	21.3	15.3								25.3	21.6	18.4									26
28		27.7	24.2	20.7	16.7	13.3							24.5	21.3	18.2	13.2	11.5							28
30		26.5	24.8	20.7	17.3	13.8	10.4	8.1					24.2	20.7	18.2	15.0	11.8	9.0						30
32			23.3	20.7	17.3	14.4	10.9	8.4	6.3					20.1	17.6	15.0	12.2	9.5	6.9					32
34			22.8	20.2	17.3	14.4	11.3	8.6	6.6	4.6				19.6	17.6	15.0	12.7	9.8	7.1	4.0	2.9			34
36			21.9	19.6	16.7	14.4	11.5	8.9	6.8	4.9	3.2			19.4	17.3	15.0	12.4	10.0	7.5	4.6	3.2			36
38				19.1	16.3	14.4	11.5	8.9	6.8	5.2	3.2				16.8	14.4	12.2	10.0	7.5	5.2	3.5	1.7		38
40				18.6	16.1	13.8	11.5	8.9	6.8	5.4	3.5				16.3	14.1	12.0	10.0	7.5	5.8	4.0	1.8		40
42				18.4	15.6	13.7	11.5	8.9	6.8	5.4	3.7				16.1	13.9	11.7	9.8	7.5	5.8	4.3	2.1		42
44					15.3	13.5	11.2	8.9	6.8	5.4	3.8					13.7	11.5	9.8	7.5	5.8	4.3	2.3		44
46					15.1	13.2	11.0	8.9	6.8	5.4	3.8					13.2	11.3	9.7	7.5	5.8	4.3	2.6		46
48					15.0	13.0	10.9	8.9	6.8	5.4	3.8					12.7	11.0	9.4	7.5	5.8	4.3	2.9		48
50						12.8	10.8	8.9	6.8	5.4	3.8						10.8	9.3	7.5	5.8	4.3	2.9		50
52						12.5	10.5	8.6	6.8	5.4	3.8						10.6	9.2	7.5	5.8	4.3	2.9		52
54						12.3	9.9	8.5	6.8	5.2	3.8						10.4	9.0	7.2	5.8	4.3	3.0		54
56							9.3	8.4	6.8	5.2	3.8							8.7	7.1	5.8	4.3	3.0		56
58							8.8	8.3	6.7	5.2	3.8							8.4	7.0	5.6	4.3	3.0		58
60							8.3	8.2	6.6	5.2	3.8							8.1	6.9	5.5	4.3	3.0		60
62								8.1	6.4	5.1	3.7								6.7	5.4	4.3	3.0		62
64								7.8	6.3	4.9	3.6								6.4	5.3	4.3	3.0		64
66								7.6	6.2	4.8	3.5								6.3	5.2	4.3	3.0		66
68									6.0	4.7	3.3									5.1	4.1	3.0		68
70									5.8	4.6	3.2									4.8	4.0	2.8		70
72									5.4	4.5	3.1									4.6	3.9	2.5		72
74										4.4	3.0										3.7	2.4		74
76										4.1	2.9										3.5	2.3		76
78										3.9	2.8										3.1	2.2		78
80											2.6											2.1		80
82											2.5											2.0		82
84											2.3											1.7		84
	3	3	2	2	2	2	1	1	1	1	1	3	2	2	2	1	1	1	1	1	1	1		
	9.0	9.0	9.0	9.0	9.0	9.0	9.0	9.0	9.0	9.0	9.0	9.0	9.0	9.0	9.0	9.0	9.0	9.0	9.0	9.0	9.0	9.0		

**Remark:**

1. Ratings above are the rated lifting capacities when this crane is supported with the firm ground and stays in level.
2. Choose rated lifting capacity of the longer boom and radius when the actual boom length and radius are between two values in the charts.
3. The rated lifting capacities include the weight of hook block and riggings.

# Load Chart - Luffing Jib with Superlift Device



Unit: t

Luffing Jib m	60m						64.9m					Luffing Jib m
	18m	24m	30m	36m	42m	48m	18m	24m	30m	36m	42m	
18												18
20	28.2											20
22	27.0	23.0					24.2					22
24	26.5	22.4	19.6				23.0	20.1				24
26	25.9	22.1	19.0	16.1			22.4	19.0	17.1			26
28		21.9	18.4	15.5	13.1			18.4	16.1	14.4		28
30		20.7	17.9	15.5	13.0	10.7		17.3	15.8	13.8	11.4	30
32		19.8	17.5	15.5	12.9	10.9		17.3	15.4	13.8	11.3	32
34			17.3	15.2	12.8	10.9			15.1	13.0	11.2	34
36			17.0	15.0	12.7	10.9			14.4	12.8	11.1	36
38			16.1	14.6	12.5	10.9			13.8	12.5	11.0	38
40				14.4	12.3	10.7				12.3	10.9	40
42				14.1	12.0	10.6				12.0	10.7	42
44				13.8	11.7	10.5				10.9	10.4	44
46					11.6	10.2					10.2	46
48					11.5	10.0					10.1	48
50					10.4	9.8					10.0	50
52						9.5					9.0	52
54						9.3						54
56						9.0						56
58												58
60												60
62												62
64												64
66												66
68												68
70												70
72												72
74												74
76												76
78												78
80												80
82												82
84												84
	2	2	2	2	1	1	2	2	2	1	1	
	9.0	9.0	9.0	9.0	9.0	9.0	9.0	9.0	9.0	9.0	9.0	

**Remark:**

1. Ratings above are the rated lifting capacities when this crane is supported with the firm ground and stays in level.
2. Choose rated lifting capacity of the longer boom and radius when the actual boom length and radius are between two values in the charts.
3. The rated lifting capacities include the weight of hook block and riggings.



## SANY GROUP CRANE BU

SANY Mobile Crane Industrial Park, No.168 Jinzhou Avenue, Jinzhou Development Zone, Changsha City,  
Hunan Province, P.R. China Zip 410600  
Consulting [sanycrane@sanygroup.com](mailto:sanycrane@sanygroup.com) (Crane BU) / [crd@sany.com.cn](mailto:crd@sany.com.cn) (IHQ)  
After-sales Service 0086-400 6098 318

**Reminder:**

Any change in the technical parameters and configuration due to product modification or upgrade may occur without prior notice. The machine in the picture may include additional equipment. This brochure is for reference only, and goods in kind shall prevail.

Copyright at SANY. No part of this brochure may be copied or used for any purpose without written approval from SANY.

© Edited in May 2023

